

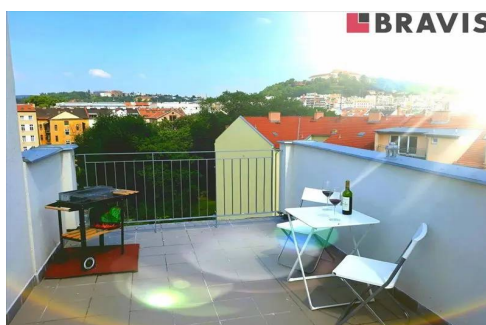
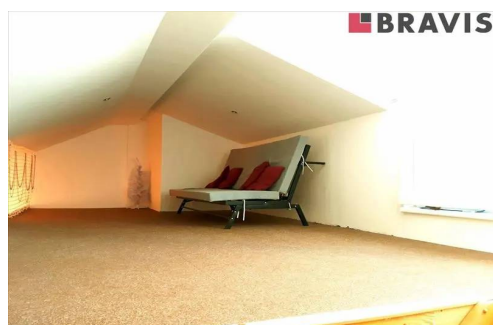
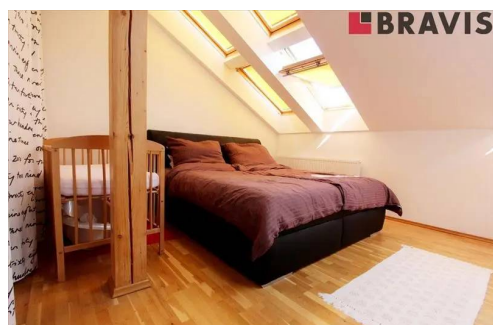
Bravis
+420 725 811 144 bravis@bravis.cz

1 bedroom attic apartment for rent, Nové Sady street, Brno - city,
furnished, air conditioning, c... (reference24503)



Rented

Total area: 64 m²
Sort of real property: Flat 2+kk
Furniture: Yes
Structure: brick
Floor: 4. floor
Lift: No
PENB: G



Facilities



Kuchyňská linka



Pračka



Vana



Lednice



Sporák



Myčka



Nábytek



Televize



Alarm

1 bedroom attic apartment for rent, Nové Sady street, Brno - city, furnished, air conditioning, cellar, internet included, near Spielberg Office Center

On exclusive behalf of the owner we offer for rent a furnished, air-conditioned attic 1 bedroom apartment Nové Sady street in Brno with internet and TV included cellar and near the Spielberg Office Center, Titania and Campus Square.

The apartment (64 m²) is located on the 4th floor of a brick house without a lift.
It is fully furnished.

The kitchen is equipped with a kitchenette, hot-air oven, induction plate, microwave, dishwasher and fridge.

Room with kk (25 m²) is equipped with 3-seater sofa, coffee table and TV.

The fee for TV and Internet is included in the rental price.

The apartment has air conditioning on the remote control.

The bedroom (17.6 m²) features a double bed with storage space and wardrobes.

The apartment also has a sleeping gallery (14 m²) with a sofa bed that can be used as a bedroom, a study room or a games room.

The gallery is accessible by wooden stairs with a handrail from which you enter a spacious terrace (17 m²).

The terrace is equipped with outdoor furniture and views of both Brno's landmarks.

The orientation of the apartment is JZ.

The bathroom (4.5 m²) has a bathtub, sink and washing machine.

The toilet (1.6 m²) is separate.

Additional storage space is located in the corridor (14 m²) of the apartment.

The apartment is new Baxi boiler with thermostat, new el. water distribution and distribution.

In the windows to the street there are noise-proof windows, in the windows of the blinds, in the ceiling light illumination.

In the basement of the house is also a cellar belonging to the apartment and a common bicycle room.

Parking is possible in the courtyard and adjoining surroundings.

The apartment is located in the center of Brno with excellent public transport links and amenities: within walking distance of the Titanium, the Spielberg Office Center, the main railway station and the historic center; ATM, shops, restaurants, wine bars, cafes, fitness, cycle paths and more.

As part of our services we also offer regular or one-time cleaning with our cleaning service.

Guided tours can be arranged with the broker.

Similar property



Rent, Flats 2+KT, 70 m² - Brno - Bystrc

Adamcova, Brno - Bystrc

16 500 CZK/month
Reserved | Sort of real property: **Flat 2+kk** | Total area: **70 m²**


Rent of a high-standard apartment 2+kk, Brno - center, Jakubská street, furnished, air conditioning, parking available

Jakubská, Brno - Brno-město

27 500 CZK/month
(+ 6 987 CZK services and energy deposits incl. VAT + deposit + commission)

Reserved | Sort of real property: **Flat 2+kk** | Total area: **79 m²**


2+kk apartment for rent, Brno - střed, Kopečná street, fully furnished, parking available, excellent accessibility

Kopečná, Brno - Staré Brno

26 500 CZK/month
(+ 11 896 CZK utilities + deposit + commission)

Reserved | Sort of real property: **Flat 2+kk** | Total area: **87 m²**


Rent flats 2+KT, 36 m² - Popůvky

Chaloupky, Popůvky

14 500 CZK/month
Reserved | Sort of real property: **Flat 2+kk** | Total area: **36 m²**



Rent, Flats 2+KT, 62 m² - Popůvky

Popůvky

16 500 CZK/month
(+ 4.500,- CZK utilities + deposit + agency fee)

Reserved | Sort of real property: **Flat 2+kk** | Total area: **65 m²**



Rent of a luxury apartment 2+kk in the KVIN Residence, Leitnerova Street, Brno - center, new building, terrace, parking in the building, Leitnerova, Brno - Staré Brno

34 000 CZK/month
(+ 7,330 CZK services and energy deposits incl. VAT + deposit + commission)

Reserved | Sort of real property: **Flat 2+kk** | Total area: **54 m²**